

(19) **United States**

(12) **Patent Application Publication**
Long et al.

(10) **Pub. No.: US 2022/0414324 A1**

(43) **Pub. Date: Dec. 29, 2022**

(54) **AUGMENTED NATURAL LANGUAGE GENERATION PLATFORM**

(71) Applicant: **STATS LLC**, Chicago, IL (US)

(72) Inventors: **Adam Long**, Chicago, IL (US); **Nick Haynes**, Chicago, IL (US); **Dan Salo**, Chicago, IL (US); **Heather Dahm**, Chicago, IL (US); **Jacob McCright**, Chicago, IL (US); **Michael Dillon**, Chicago, IL (US); **Hannah Deters**, Chicago, IL (US); **Anup Khadka**, Chicago, IL (US)

(73) Assignee: **STATS LLC**, Chicago, IL (US)

(21) Appl. No.: **17/822,884**

(22) Filed: **Aug. 29, 2022**

Related U.S. Application Data

(63) Continuation of application No. 17/039,172, filed on Sep. 30, 2020, now Pat. No. 11,429,783.

(60) Provisional application No. 62/908,235, filed on Sep. 30, 2019.

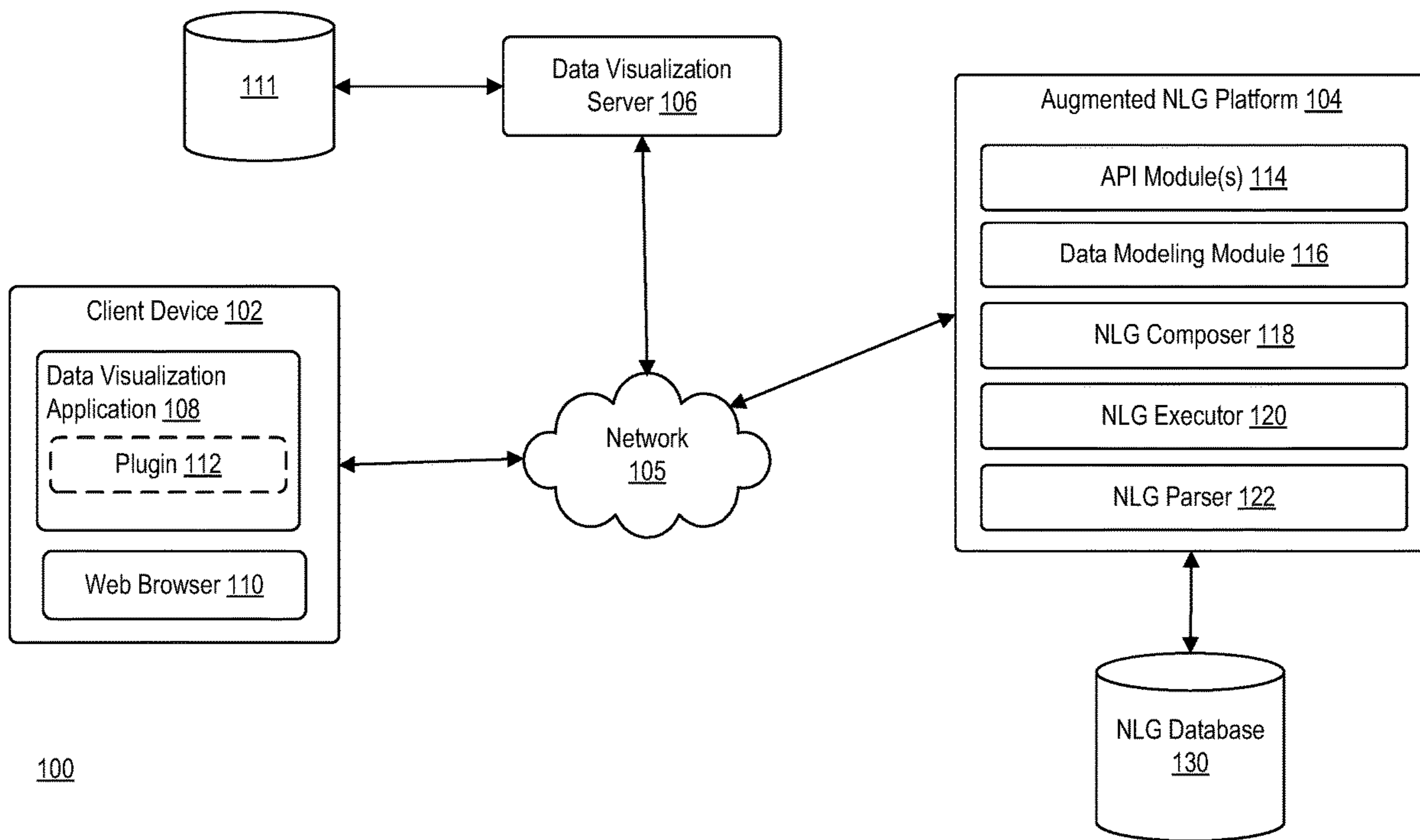
Publication Classification

(51) **Int. Cl.**
G06F 40/186 (2006.01)

(52) **U.S. Cl.**
 CPC **G06F 40/186** (2020.01); **G06F 40/205** (2020.01)

(57) **ABSTRACT**

A computing system receives a request to generate one or more narrative frameworks for a worksheet. The worksheet is hosted by a third party server. The computing system interfaces with the third party server to retrieve data associated with the worksheet. The computing system infers attributes of the worksheet from the retrieved data. The attributes correspond to a type of data represented in the worksheet. The computing system generates a narrative template for the one or more narrative frameworks. The computing system generates one or more data variables for the one or more narrative frameworks based on the generated narrative template. The computing system constructs the one or more narrative frameworks by selectively retrieving data from the worksheet for each data variable of the one or more data variables in the narrative framework.



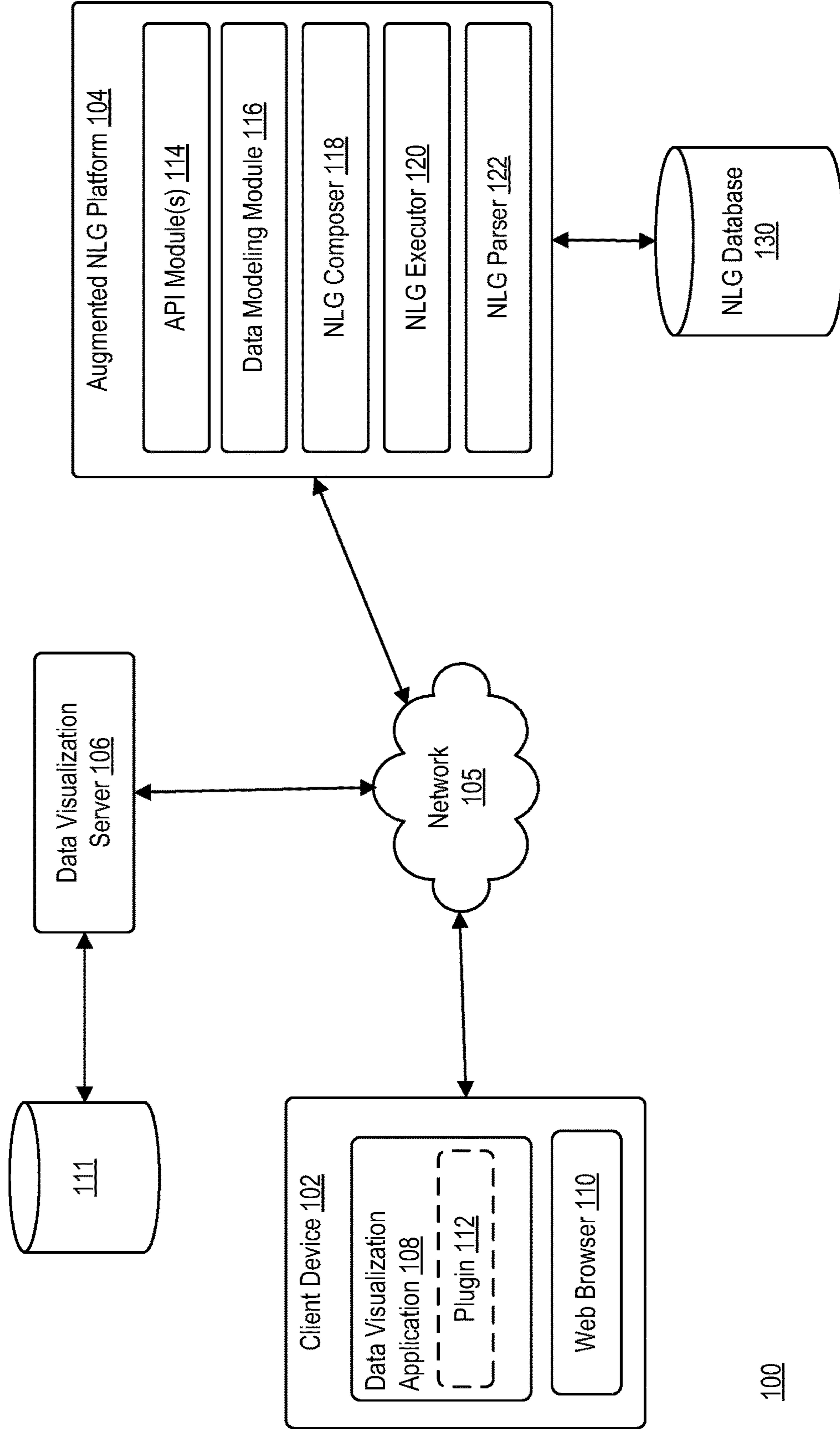


FIG. 1

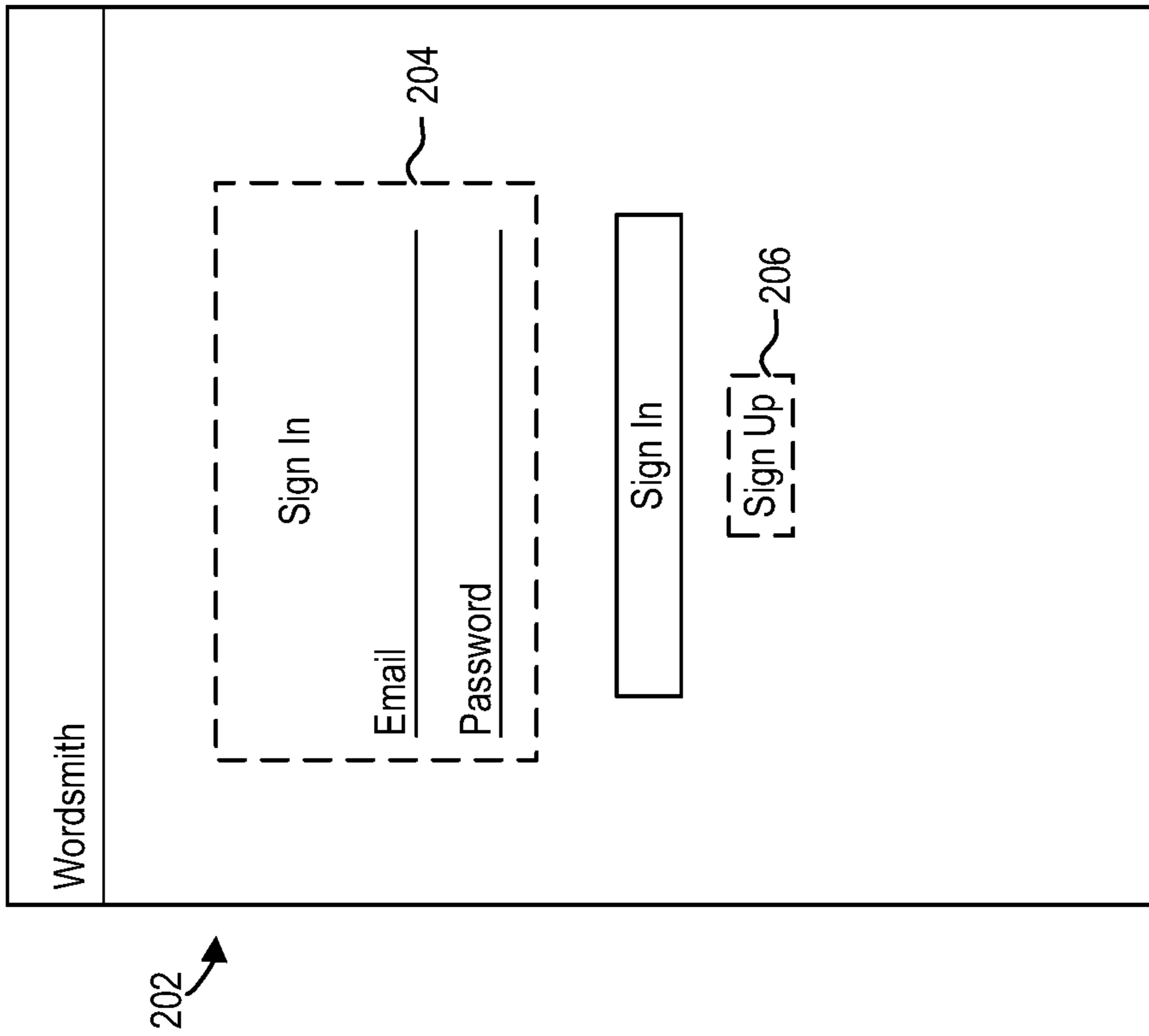


FIG. 2A

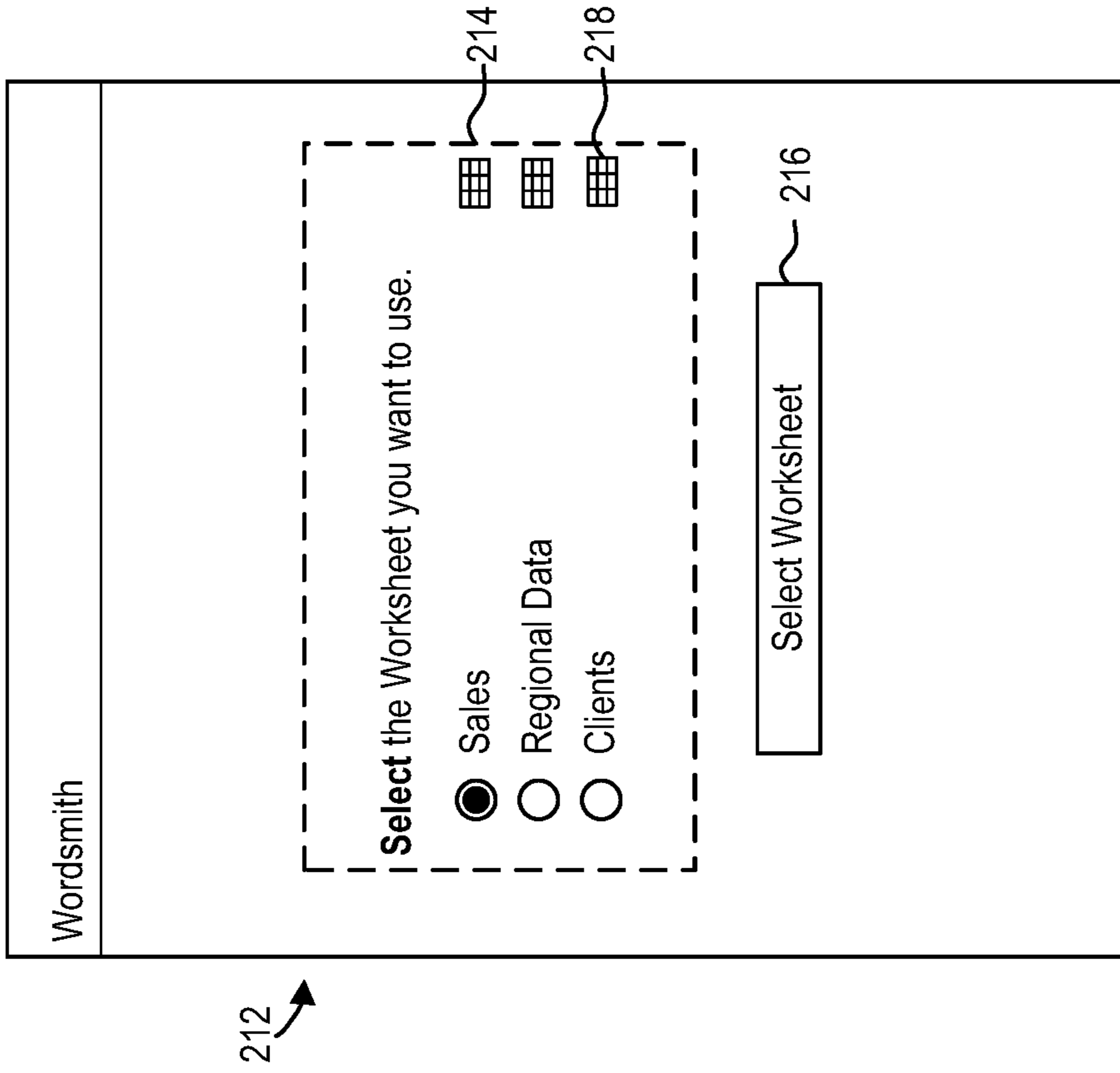


FIG. 2B

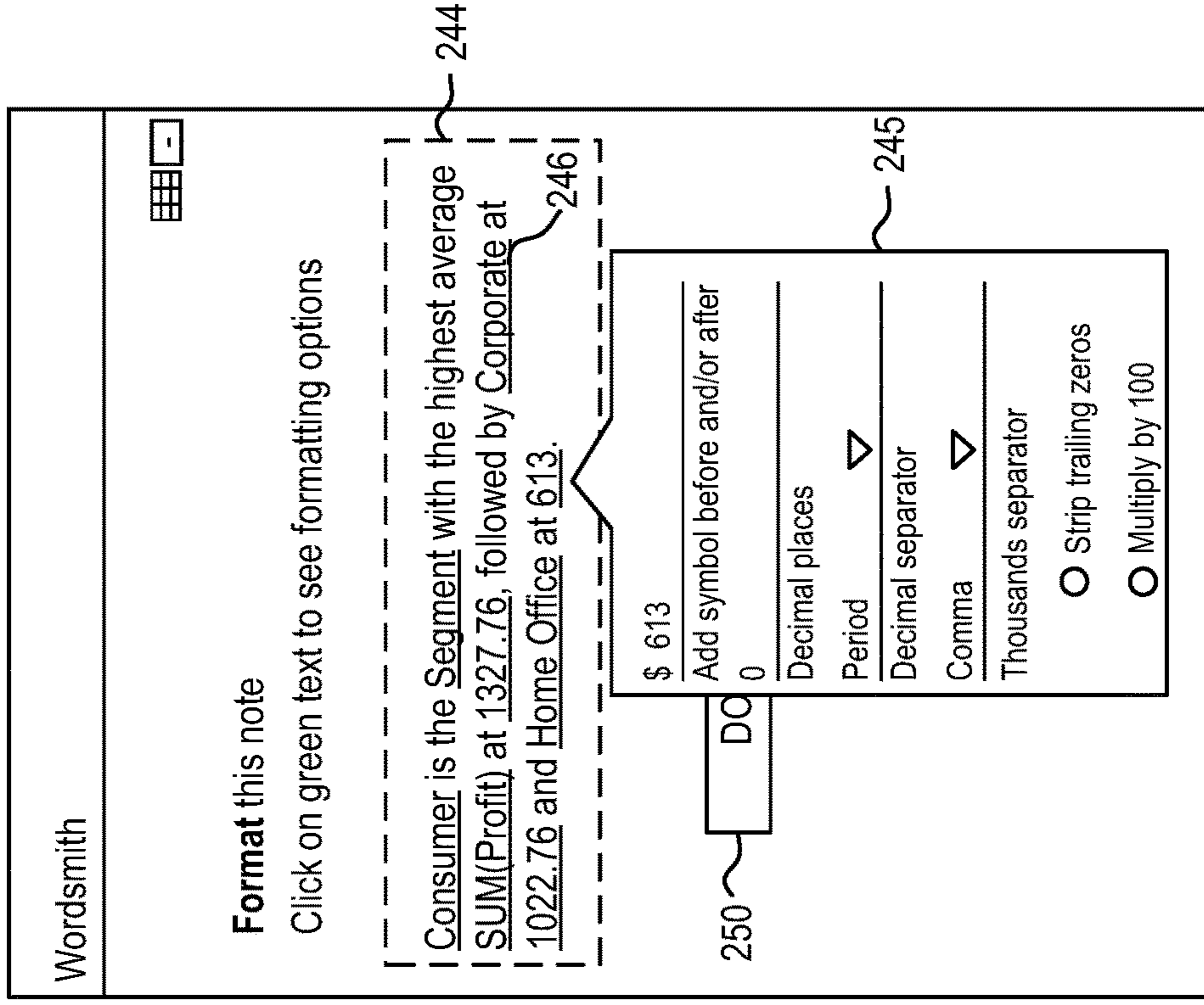


FIG. 2D

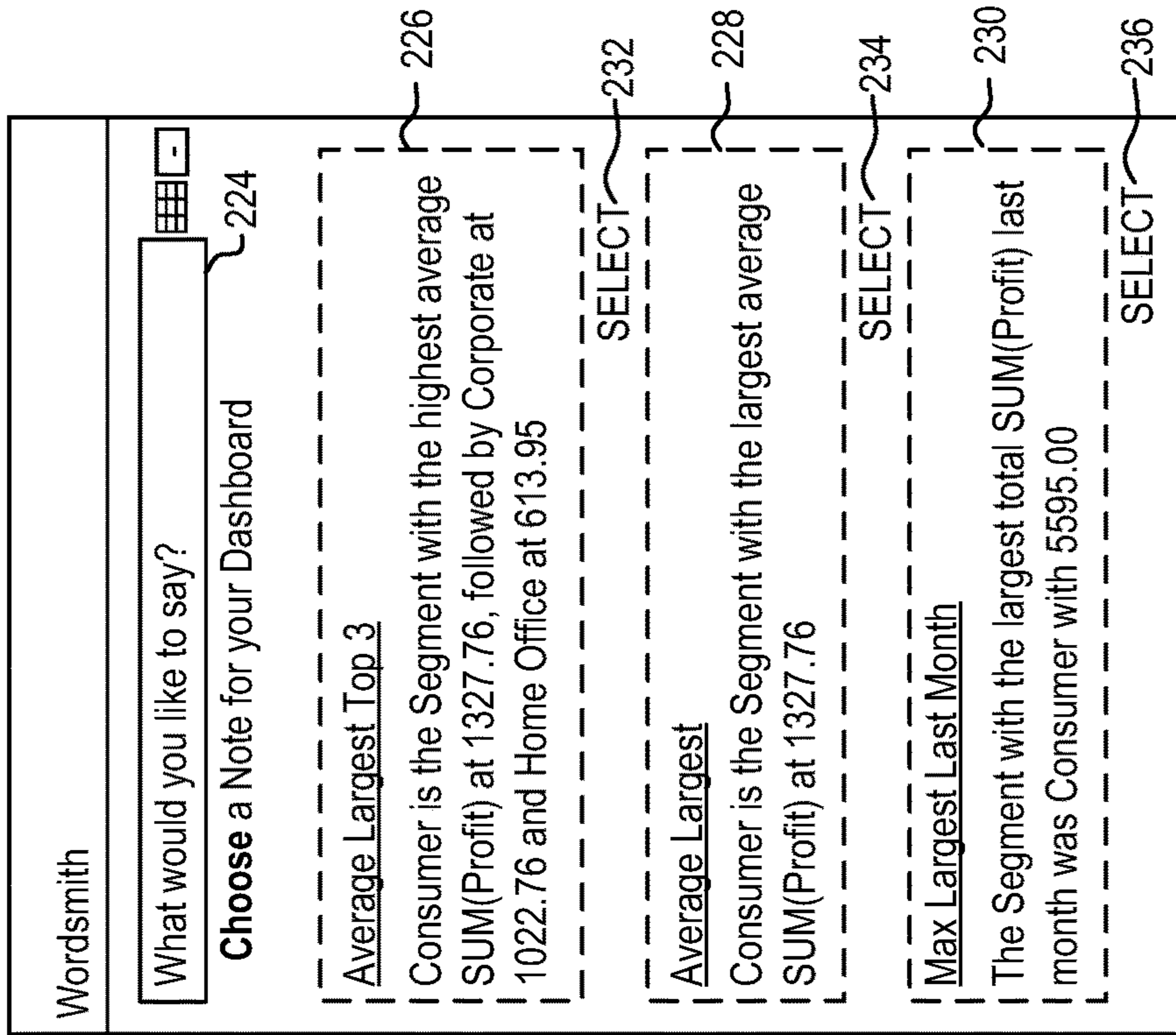


FIG. 2C

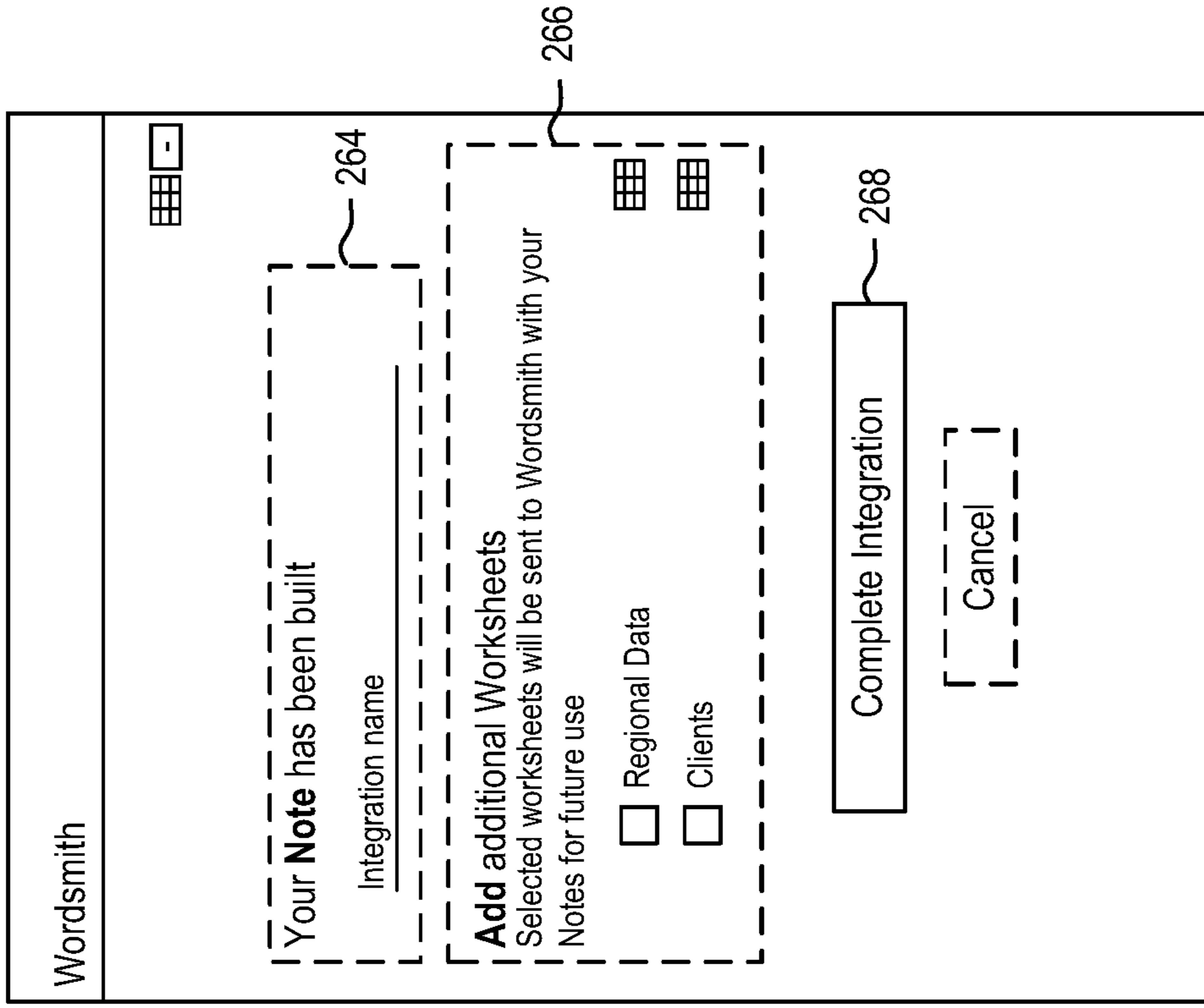


FIG. 2F

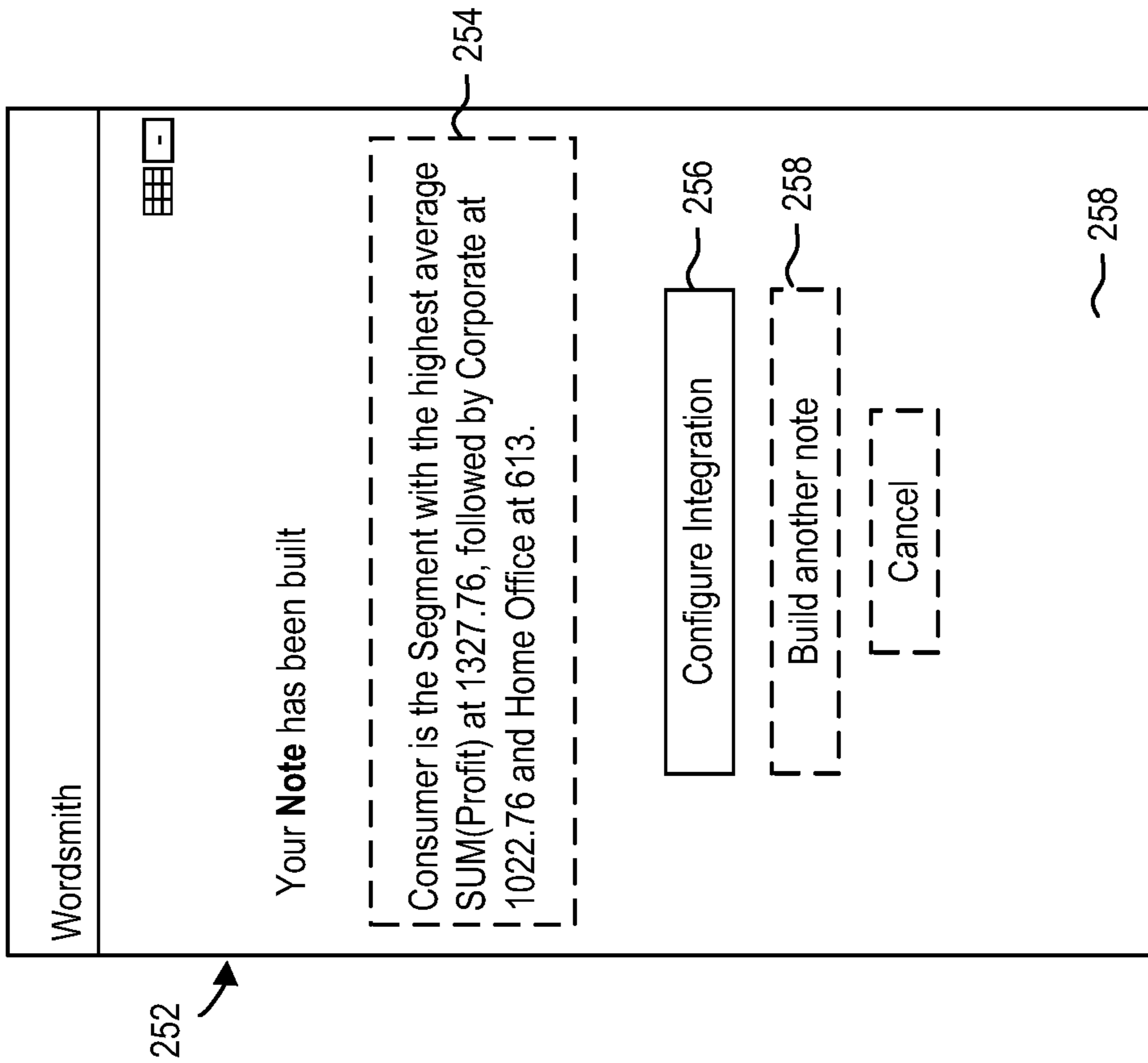


FIG. 2E

300

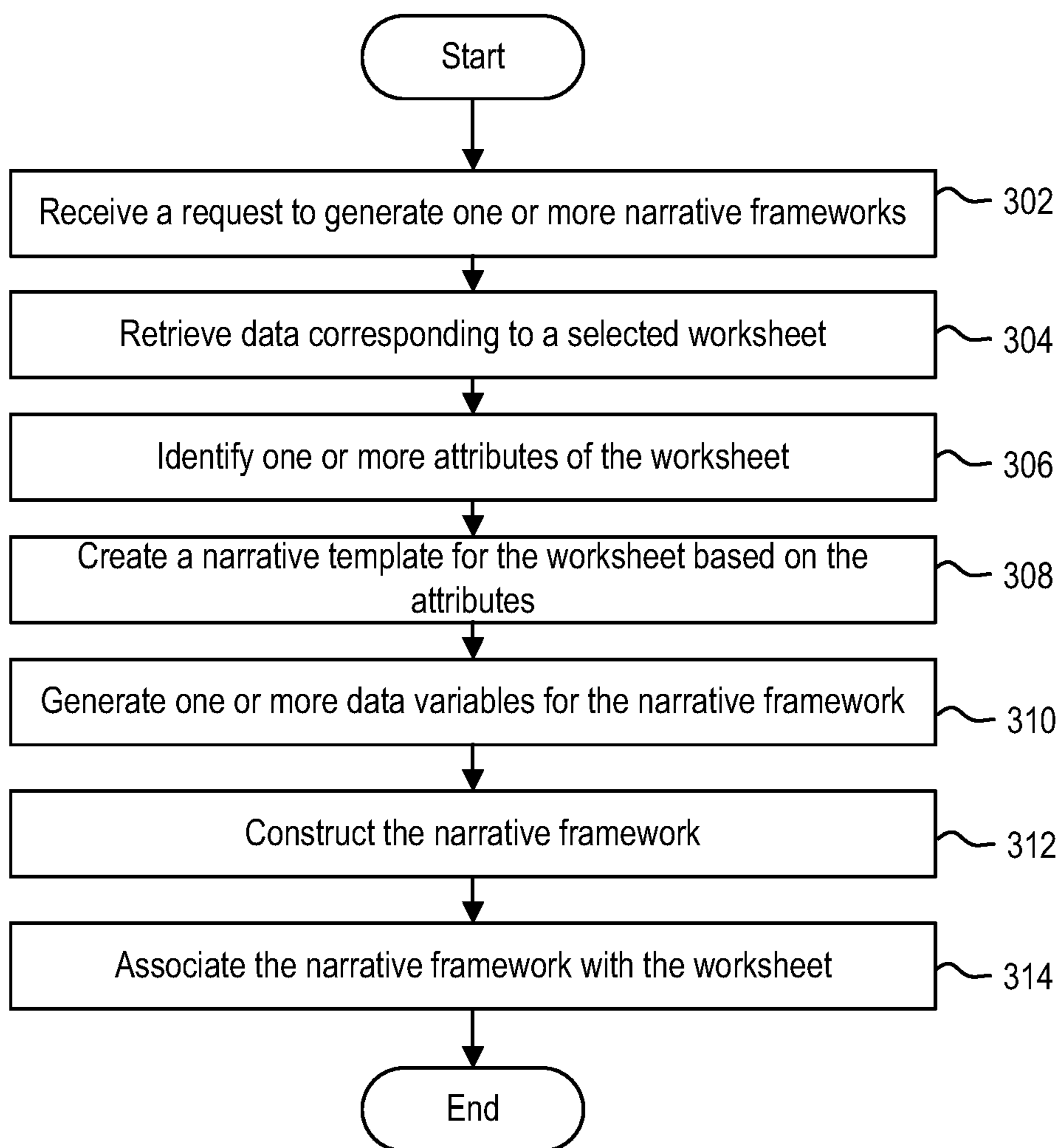
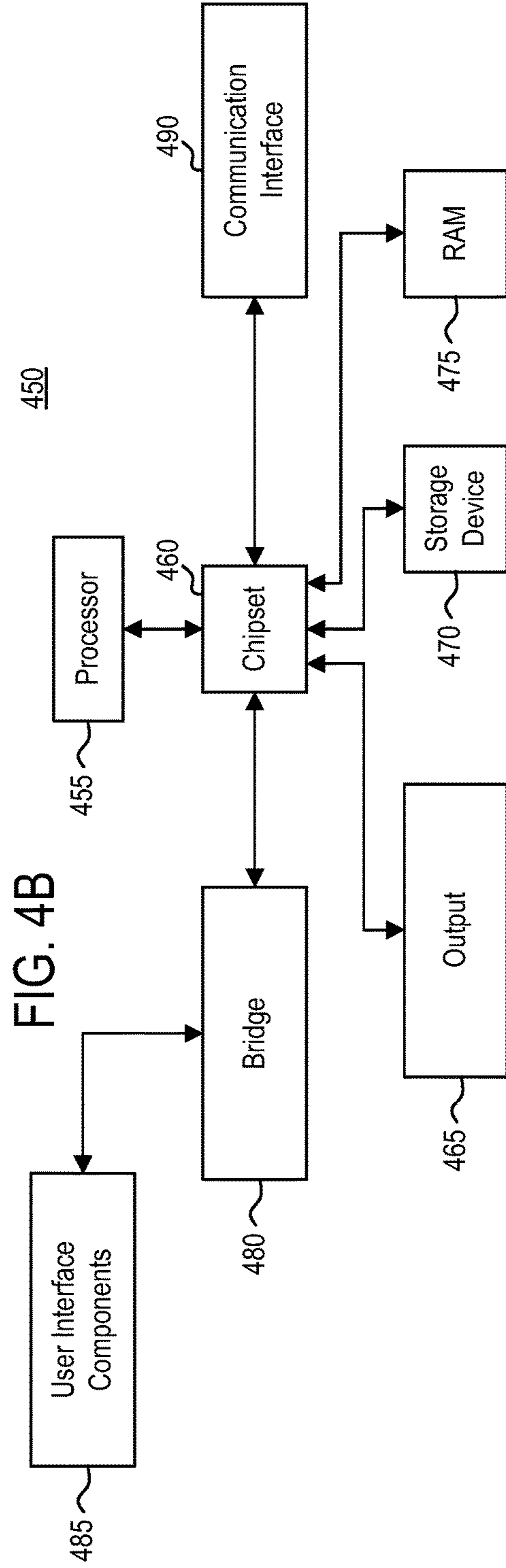
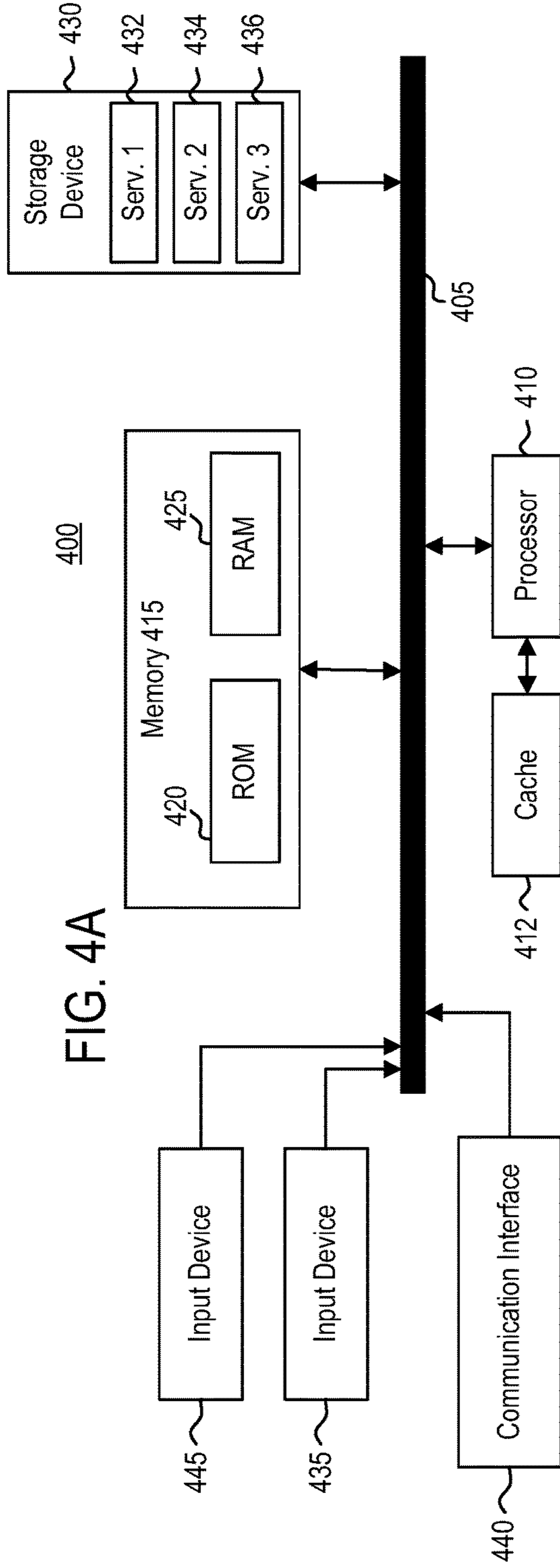


FIG. 3



AUGMENTED NATURAL LANGUAGE GENERATION PLATFORM

CROSS-REFERENCE TO RELATED APPLICATIONS

[0001] This application is a continuation of U.S. application Ser. No. 17/039,172, filed Sep. 30, 2020, which claims priority to U.S. Provisional Application Ser. No. 62/908,235, filed Sep. 30, 2019, which are incorporated by reference in their entireties.

FIELD OF THE DISCLOSURE

[0002] The present disclosure generally relates to an augmented natural language generation platform and a method of operating the same.

BACKGROUND

[0003] The unprecedented rise of big data has revolutionized the intelligence industry, with trillions of gigabytes of data currently existing. In response to this influx of data, analysts and data scientists have created highly complex and congested dashboards to help analyze and interpret the massive amounts of data they typically have on hand. As a result, even the most experienced data scientists may struggle to adequately communicate the insights gained from the plurality of charts and graphs that were generated.

SUMMARY

[0004] In some embodiments, a method is disclosed herein. A computing system receives a request to generate one or more narrative frameworks for a worksheet. The worksheet is hosted by a third party server. The computing system interfaces with the third party server to retrieve data associated with the worksheet. The computing system infers attributes of the worksheet from the retrieved data. The attributes correspond to a type of data represented in the worksheet. The computing system generates a narrative template for the one or more narrative frameworks. The computing system generates one or more data variables for the one or more narrative frameworks based on the generated narrative template. The computing system constructs the one or more narrative frameworks by selectively retrieving data from the worksheet for each data variable of the one or more data variables in the narrative framework.

[0005] In some embodiments, a non-transitory computer readable medium is disclosed herein. The non-transitory computer readable medium includes instructions which, when executed by a computing system, cause the computing system to perform operations. The operations include receiving, by a computing system, a request to generate one or more narrative frameworks for a worksheet. The worksheet is hosted by a third party server. The operations further include interfacing, by the computing system, with the third party server to retrieve data associated with the worksheet. The operations further include inferring, by the computing system, attributes of the worksheet from the retrieved data. The attributes correspond to a type of data represented in the worksheet. The operations further include generating, by the computing system, a narrative template for the one or more narrative frameworks. The operations further include generating, by the computing system, one or more data variables for the one or more narrative frameworks based on the generated narrative template. The operations further include

constructing, by the computing system, the one or more narrative frameworks by selectively retrieving data from the worksheet for each data variable of the one or more data variables in the narrative framework.

[0006] In some embodiments, a system is disclosed herein. The system includes a processor and a memory. The memory has programming instructions stored thereon, which, when executed by the processor, performs operations. The operations include receiving a request to generate one or more narrative frameworks for a worksheet. The worksheet is hosted by a third party server. The operations further include interfacing with the third party server to retrieve data associated with the worksheet. The operations further include inferring attributes of the worksheet from the retrieved data. The attributes correspond to a type of data represented in the worksheet. The operations further include generating a narrative template for the one or more narrative frameworks. The operations further include generating one or more data variables for the one or more narrative frameworks based on the generated narrative template. The operations further include constructing the one or more narrative frameworks by selectively retrieving data from the worksheet for each data variable of the one or more data variables in the narrative framework.

BRIEF DESCRIPTION OF THE DRAWINGS

[0007] So that the manner in which the above recited features of the present disclosure can be understood in detail, a more particular description of the disclosure, briefly summarized above, may be had by reference to embodiments, some of which are illustrated in the appended drawings. It is to be noted, however, that the appended drawings illustrated only typical embodiments of this disclosure and are therefore not to be considered limiting of its scope, for the disclosure may admit to other equally effective embodiments.

[0008] FIG. 1 is a block diagram illustrating a computing environment, according to example embodiments.

[0009] FIG. 2A illustrates a graphical user interface corresponding to a step in the process flow of augmented natural language generation, according to example embodiments.

[0010] FIG. 2B illustrates a graphical user interface corresponding to a step in the process flow of augmented natural language generation, according to example embodiments.

[0011] FIG. 2C illustrates a graphical user interface corresponding to a step in the process flow of augmented natural language generation, according to example embodiments.

[0012] FIG. 2D illustrates a graphical user interface corresponding to a step in the process flow of augmented natural language generation, according to example embodiments.

[0013] FIG. 2E illustrates a graphical user interface corresponding to a step in the process flow of augmented natural language generation, according to example embodiments.

[0014] FIG. 2F illustrates a graphical user interface corresponding to a step in the process flow of augmented natural language generation, according to example embodiments.

[0015] FIG. 3 is a flow diagram illustrating a method of creating a report for a data sheet, according to example embodiments.

[0016] FIG. 4A is a block diagram illustrating a computing device, according to example embodiments.

[0017] FIG. 4B is a block diagram illustrating a computing device, according to example embodiments.

[0018] To facilitate understanding, identical reference numerals have been used, where possible, to designate identical elements that are common to the figures. It is contemplated that elements disclosed in one embodiment may be beneficially utilized on other embodiments without specific recitation.

DETAILED DESCRIPTION

[0019] No matter how much data an organization can collect and process, at the end of the day, it is only as useful as the decisions that are gleaned from that data. Modern analytics dashboards and visualizations can help organize and arrange complex sets of data for interpretation. However, these dashboards are typically unable to generate actionable recommendations from the data. Extracting actual insights out of the various charts and graphs of a dashboard remains a very time extensive and subjective process.

[0020] One or more techniques described herein provides an augmented natural language generation engine for use with data visualization software. For example, one or more techniques described herein provide an augmented natural language generation engine that works in conjunction with data visualization software to create highly targeted, dynamic, and compelling reports based on data managed by the data visualization software.

[0021] FIG. 1 is a block diagram illustrating a computing environment 100, according to example embodiments. Computing environment 100 may include a client device 102, an augmented natural language generation platform 104, and a data visualization server 106 communicating via network 105.

[0022] Network 105 may be of any suitable type, including individual connections via the Internet, such as cellular or Wi-Fi networks. In some embodiments, network 105 may connect terminals, services, and mobile devices using direct connections, such as radio frequency identification (RFID), near-field communication (NFC), Bluetooth™, low-energy Bluetooth™ (BLE), Wi-Fi™ ZigBee™, ambient backscatter communication (ABC) protocols, USB, WAN, or LAN. Because the information transmitted may be personal or confidential, security concerns may dictate one or more of these types of connection be encrypted or otherwise secured. In some embodiments, however, the information being transmitted may be less personal, and therefore, the network connections may be selected for convenience over security.

[0023] Network 105 may include any type of computer networking arrangement used to exchange data or information. For example, network 105 may be the Internet, a private data network, virtual private network using a public network and/or other suitable connection(s) that enables components in computing environment 100 to send and receive information between the components of environment 100.

[0024] Client device 102 may be operated by a user. For example, client device 102 may be a mobile device, a tablet, a desktop computer, or any computing system having the

capabilities described herein. Users may include, but are not limited to, individuals such as, for example, subscribers, clients, prospective clients, or customers of an entity associated with augmented natural language generation platform 104, such as individuals who have obtained, will obtain, or may obtain a product, service, or consultation from an entity associated with augmented natural language generation platform 104.

[0025] Client device 102 may include at least data visualization application 108. Data visualization application 108 may be representative of a stand-alone mobile or desktop data visualization software. Exemplary data visualization software may include, but is not limited to, Tableau, Sisense, Qlik, Plotly, Power BI, MicroStrategy, and the like. As illustrated, via data visualization application 108, client device 102 may access functionality of data visualization server 106. For example, while interacting with data visualization application 108, a user may access various data sheets stored in database 111 by transmitting a request to data visualization server 106 via data visualization application 108.

[0026] Data visualization application 108 may include plugin 112. Plugin 112 may be associated with augmented natural language generation platform 104. For example, via plugin 112, client device 102 may access functionality of augmented natural language generation platform 104 directly within data visualization application 108. Client device 102 may communicate over network 105 to access functionality of augmented natural language generation platform 104. The content that is displayed to client device 102 may be transmitted from augmented natural language generation platform 104 to client device 102, and subsequently processed by data visualization application 108 for display through a graphical user interface (GUI) of client device 102.

[0027] In some embodiments, client device 102 may include web browser 110. Via web browser 110, client device 102 may access functionality of data visualization server 106 via one or more hypertext transfer protocol (HTTP) requests. In other words, in addition to accessing functionality of data visualization server 106 via a desktop or mobile application (e.g., data visualization application 108), a user may also access functionality of data visualization server 106 via a browser. In such embodiments, the browser-based data visualization application may include an integration with augmented natural language generation platform 104.

[0028] Augmented natural language generation platform 104 may include application programming interface (API) module 114, data modeling module 116, NLG composer 118, NLG executor 120, and NLG parser 122. Each or API module 114, data modeling module 116, NLG composer 118, NLG executor 120, and NLG parser 122 may be comprised of one or more software modules. The one or more software modules may be collections of code or instructions stored on a media (e.g., memory of augmented natural language generation platform 104) that represent a series of machine instructions (e.g., program code) that implement one or more algorithmic steps. Such machine instructions may be the actual computer code the processor of augmented natural language generation platform 104 interprets to implement the instructions or, alternatively, may be a higher level of coding of the instructions that is interpreted to obtain the actual computer code. The one or

more software modules may also include one or more hardware components. One or more aspects of an example algorithm may be performed by the hardware components (e.g., circuitry) itself, rather as a result of the instructions.

[0029] Augmented natural language generation platform **104** may be representative of a back-end complement to the front end integration of plugin **112** with data visualization application **108**. Augmented natural language generation platform **104** may be configured to execute three functions: data modeling, etude processing, and etude execution. In operation, when a user interacts with plugin **112** via data visualization application **108**, plugin **112** may prompt the user to select a target data set. The target data set may correspond to a data set associated with a user's account with the data visualization software. Upon receiving a selection of a target data set, plugin **112** may interface with augmented natural language generation platform **104**. In some embodiments, plugin **112** may interface with augmented natural language generation platform **104** via one or more APIs managed by API module **114**.

[0030] Upon receiving the target data set, data modeling module **116** may be configured to analyze the data set and extract information therefrom. In some embodiments, data modeling module **116** may be configured to infer data column types from the data set. In some embodiments, data modeling module **116** may be configured to infer detailed metadata for any columns and tables in the data set. This defines the type of data associated with the data set.

[0031] Generally, the data modeling performed by data modeling module **116** may be performed in two steps. During the first step, data modeling module **116** may attempt to cast a given string literal to an instance of an object with a certain type. If the cast is successful, the corresponding type may be returned. If however, the attempt fails, an error may be raised. In some embodiments, data modeling module **116** may loop over an ordered list of types until a successful cast is found. Data modeling module **116** may create a table schema based on the type inference. The table schema may be representative of a record of the identified types for each column.

[0032] The second step of the data modeling process may include three substeps: infer, aggregate, and discover. During the infer substep, data modeling module **116** may transform the rows of a table object into columns, with each column being assigned a subtype based on its type.

[0033] During the aggregate sub step, data modeling module **116** may generate metrics based on the data. For example, data modeling module **116** may generate metrics, such, as but not limited to, count of null, sums based on unique records, totals, mean, median, standard deviation, and the like.

[0034] During the discover substep, data modeling module **116** may identify patterns among the table columns. To do so, data modeling module **116** may analyze the interactions between columns, instead of focusing on the individual columns themselves. In some embodiments, data modeling module **116** may identify hierarchies. Hierarchies may correspond to a series of one-to-many relationships among the columns of the table. These relationships may be represented by a directed graph, with keys parents and children. In some embodiments, this analysis may include columns with the string subtype. In some embodiments, data modeling module **116** may identify correlations. For example, data modeling module **116** may be configured to identify pairs of

columns that are correlated with each other. In some embodiments, data modeling module **116** may be configured to identify pairs of columns that are perfectly correlated with each other. This analysis may be performed on all columns.

[0035] NLG composer **118** may be configured to analyze the inferred data generated by data modeling module **116** and may match the inferred data to an existing collection of motifs. A motif may refer to a blueprint for creating a template for the data. The blueprint may include the types of nodes that may be generated based on the data. In some embodiments, NLG composer **118** may match the inferred data to an existing set of motifs based on a specified mapping from motif fields to inputs to return a note, i.e., a collection of templates. In some embodiments, NLG composer **118** may recursively traverse through a compute graph to make an appropriate substitution in the merge fields. In some embodiments, such process can be specified by the fields themselves or overridden by various configurations. NLG executor **120** may be configured to analyze the mapped set of motifs and generate a project and template for the data. For example, NLG executor **120** may create various data variables and a template based on the mapped set of motifs.

[0036] NLG parser **122** may be configured to generate an executed report based on the data variables and the template generated by NLG executor **120**. For example, based on the data variables and the template, NLG parser **122** may be configured to generate an actionable insight or note based for the data set. In some embodiments, NLG parser **122** may leverage a library to create a grammar and corresponding parser. In some embodiments, NLG parser **122** may parse the code into a structured abstract syntax tree (AST). As the AST is being built, NLG parser **122** may check the AST for static errors (e.g., invalid data types passed to a function/operator). In some embodiments, the AST may be evaluated to the result of the code.

[0037] Augmented natural language generation platform **104** may be configured to communicate with NLG database **130**. NLG database **130** may be configured to store various motifs and templates for data processing.

[0038] FIG. 2A illustrates an example view of a graphical user interface **202** corresponding to a step in the process flow of augmented natural language generation, according to example embodiments. Graphical user interface **202** (hereinafter "GUI **202**") may correspond to a GUI presented to a user via client device **102**. In some embodiments, GUI **202** may be a web page presented in web browser **110**. In some embodiments, GUI **202** may be a graphical user interface generated by data visualization application **108**. Generally, GUI **202** may correspond to an interface associated with plugin **112** functionality.

[0039] As illustrated, GUI **202** may correspond to an initial log-in page for plugin **112**. In some embodiments, log-in page may allow a user of client device **102** to login to their account with augmented natural language generation platform **104**. For example, via one or more fields **204**, a user may enter their username (e.g., email) and password and be granted access to functionality of augmented natural language generation platform **104**. In some embodiments, a user of client device **102** may not have an account with augmented natural language generation platform **104**. In such embodiments, a user may interact with graphical element **206**, which, when actuated, prompts the user to create an account with natural language generation platform.

[0040] FIG. 2B illustrates an example view of a graphical user interface **212** corresponding to a step in the process flow of augmented natural language generation, according to example embodiments. Graphical user interface **212** (hereinafter “GUI **212**”) may correspond to a GUI presented to a user via client device **102**. In some embodiments, GUI **202** may be a web page presented in web browser **110**. In some embodiments, GUI **202** may be a graphical user interface generated by data visualization application **108**. Generally, GUI **202** may correspond to an interface associated with plugin **112** functionality.

[0041] As illustrated, GUI **212** may be presented to a user following authentication with augmented natural language generation platform **104**. Via GUI **212**, a user may be presented with possible worksheets for augmented language generation. For example, following authentication with augmented natural language generation platform **104**, plugin **112** may access data associated with the user and managed by data visualization server **106**. In some embodiments, plugin **112** may access user data by leveraging one or more APIs of data visualization server **106**. For example, via one or more APIs of data visualization server **106**, plugin **112** may be granted to access to a user’s data stored in database **111**. In some embodiments, the data stored in database **111** may correspond to one or more worksheets.

[0042] As shown, GUI **212** may include section **214**. Section **214** may prompt the user to select a worksheet among a plurality of worksheets for natural language generation. In some embodiments, each worksheet in section **214** may include a graphical element **218** corresponding therefore. Via interaction with graphical element **218**, a user may be navigated to the worksheet for review. In some embodiments, following interaction with graphical element **218**, the user may be presented with an overlay window that includes a preview of the underlying worksheet.

[0043] Following selection of a worksheet for natural language generation, the user may interact with graphical element **216** to advance in the workflow.

[0044] FIG. 2C illustrates an example view of a graphical user interface **222** corresponding to a step in the process flow of augmented natural language generation, according to example embodiments. Graphical user interface **222** (hereinafter “GUI **222**”) may correspond to a GUI presented to a user via client device **102**. In some embodiments, GUI **222** may be a web page presented in web browser **1120**. In some embodiments, GUI **222** may be a graphical user interface generated by data visualization application **108**. GUI **222** may correspond to an interface associated with plugin **112** functionality.

[0045] As illustrated, GUI **222** may provide the user with possible notes to be added to a user’s dashboard. GUI **222** may include one or more graphical elements **224-230**. Graphical element **224** may correspond to a search bar. Via graphical element **224**, a user may search for possible notes based on the data provided in the worksheet. For example, in operation, following selection of a worksheet via GUI **222**, augmented natural language generation platform **104** may receive access to the worksheet via one or more APIs. Once augmented natural language generation platform **104** has access to the worksheet, data modeling module **116** may analyze the worksheet and extract information for further processing. For example, data modeling module **116** may parse the worksheet and infer data column types from the worksheet. In some embodiments, data modeling module

116 may further infer detailed metadata for any columns and tables in the data set. Data modeling module **116** may provide this information to NLG composer **118**.

[0046] NLG composer **118** may analyze the inferred data and may match the inferred data to an existing collection of motifs to create a template for the data. NLG executor **120** may receive the matching information from NLG composer **118** and generate a note and template for the data. For example, NLG executor **120** may create various data variables and a template based on the mapped set of motifs. NLG executor **120** may provide the data variables and template to NLG parser for compilation.

[0047] NLG parser **122** may generate one or more notes **226**, **228**, and **230** based on the data variables and the template generated by NLG executor **120**. In some embodiments, based on the data variables and the template, NLG parser **122** may generate an actionable insight or note based on data in the worksheet. For example, NLG parser **122** may selectively pull data from the worksheet based on which data corresponds to the data variables defined by NLG executor **120**.

[0048] As shown, NLG parser **122** may generate a plurality of initial options to present to a user. Note **226** may correspond to a first option—“Average Largest Top 3.” Based on the selected worksheet, NLG parser **122** may generate a note that reads: “Consumer is the Segment with the highest average SUM(Profit) at 1327.76, following by Corporate at 1022.76 and Home Office at 613.95.” Note **228** may correspond to a second option—“Average Largest.” Based on the selected worksheet, NLG parser **122** may generate a note that reads: “Consumer is the Segment with the largest SUM(Profit) at 1327.76.” Note **230** may correspond to a third option—“Max Largest Last Month.” Based on the selected worksheet, NLG parser **122** may generate a note that reads “The Segment with the largest total SUM (Profit) last month was Consumer with 4595.00.” Each note may include an actionable element corresponding thereto. For example, as shown, actionable element **232** may correspond to note **226**; actionable element **234** may correspond to note **228**; and actionable element **236** may correspond to note **230**. Via interaction with a respective actionable element **232-236**, a user may select a respective note for display.

[0049] FIG. 2D illustrates an example view of a graphical user interface **242** corresponding to a step in the process flow of augmented natural language generation, according to example embodiments. Graphical user interface **242** (hereinafter “GUI **242**”) may correspond to a GUI presented to a user via client device **102**. In some embodiments, GUI **242** may be a web page presented in web browser **1120**. In some embodiments, GUI **242** may be a graphical user interface generated by data visualization application **108**. GUI **242** may correspond to an interface associated with plugin **112** functionality.

[0050] As illustrated, GUI **242** may allow a user to edit the generated note. GUI **242** may include actionable item **244**. Actionable item **244** may correspond to a narrative framework of the selected note from GUI **232**. For example, the representation of selected note may be composed of one or more phrase variations **246**. Each phrase variation may correspond to an item of data from the selected worksheet. Each phrase variation **246** may be actionable. For example, upon interacting with a phrase variation **246**, a user may be presented with an overlay or pop-up window **245**. Overlay

or pop-up window **245** may include one or more format options for the selected phrase variation **246**. For example, as shown, the user may interact with “613” to vary the way the data in phrase variation **246** is selected. In some embodiments, the user may add a dollar symbol in front of the number, define the number of decimal places, indicate the type of symbol used as a decimal separator, indicate if trailing zeros should be stripped, indicate if the value should be multiplied by 100, and the like. Once the note is tailored to the user’s liking, a user may interact with actionable element **250** to accept the changes.

[0051] FIG. 2E illustrates an example view of a graphical user interface **252** corresponding to a step in the process flow of augmented natural language generation, according to example embodiments. Graphical user interface **252** (hereinafter “GUI **252**”) may correspond to a GUI presented to a user via client device **102**. In some embodiments, GUI **252** may be a web page presented in web browser **110**. In some embodiments, GUI **252** may be a graphical user interface generated by data visualization application **108**. GUI **252** may correspond to an interface associated with plugin **112** functionality.

[0052] As illustrated, GUI **252** may include graphical element **254**. Graphical element **254** may include a representation of the approved note based on the narrative framework approved in GUI **242**. GUI **252** may further include actionable element **256** and actionable element **258**. Actionable element **256** may prompt the user to configure the integration. Actionable element **258** may prompt the user to build another note. For example, following interaction with actionable element **258**, a user may return to GUI **222** for selecting another note.

[0053] FIG. 2F illustrates an example view of a graphical user interface **262** corresponding to a step in the process flow of augmented natural language generation, according to example embodiments. Graphical user interface **262** (hereinafter “GUI **262**”) may correspond to a GUI presented to a user via client device **102**. In some embodiments, GUI **262** may be a web page presented in web browser **110**. In some embodiments, GUI **262** may be a graphical user interface generated by data visualization application **108**. GUI **262** may correspond to an interface associated with plugin **112** functionality.

[0054] As illustrated, GUI **262** may include graphical element **264** and graphical element **266**. Graphical element **264** may allow a user to name their integration. For example, the user can name the integration so that the user can refer back to the integration should the user wish to edit or modify the narrative framework. Graphical element **266** may allow a user to add additional worksheets to the integration. For example, as shown, graphical element **266** may include one or more prompts seeking user input to add additional worksheets. To complete the integration, a user may interact with graphical element **268**.

[0055] FIG. 3 is a flow diagram illustrating a method **300** of generating a narrative framework, according to example embodiments. Method **300** may begin at step **302**.

[0056] At step **302**, augmented natural language generation platform **104** may receive a request to generate one or more narrative frameworks for a worksheet. In some embodiments, augmented natural language generation platform **104** may receive a request from a plugin **112** executing with data visualization application **108** on client device **102**.

[0057] At step **304**, augmented natural language generation platform **104** may retrieve data corresponding to the worksheet from data visualization server **106**. For example, augmented natural language generation platform **104** may perform an API call to retrieve the identified worksheet.

[0058] At step **306**, augmented natural language generation platform **104** may identify one or more attributes of the worksheet. In some embodiments, data modeling module **116** may analyze the worksheet and extract information for further processing. For example, data modeling module **116** may parse the worksheet and infer data column types from the worksheet. In some embodiments, data modeling module **116** may further infer detailed metadata for any columns and tables in the data set. Data modeling module **116** may provide this information to NLG composer **118**.

[0059] At step **308**, augmented natural language generation platform **104** may create a narrative template for the worksheet, based on the attributes of the worksheet. In some embodiments, NLG composer **118** may analyze the inferred data. Using the inferred data, NLG composer may match the inferred data to an existing collection of motifs to create a template for the data. NLG composer **118** may provide this information to NLG executor **120**.

[0060] At step **310**, augmented natural language generation platform **104** may generate one or more data variables for the note. For example, NLG executor **120** may receive the matching information from NLG composer **118** and generate one or more data variables and template for the data. For example, NLG executor **120** may create various data variables and a template based on the mapped set of motifs. NLG executor **120** may provide the data variables and template to NLG parser for compilation.

[0061] At step **312**, augmented natural language generation platform **104** may generate a finished note based on the one or more data variables and the template. For example, NLG parser **122** may generate narrative framework based on the data variables and the template generated by NLG executor **120**. In some embodiments, based on the data variables and the template, NLG parser **122** may generate a narrative framework for the note based on data in the worksheet. For example, NLG parser **122** may selectively pull data from the worksheet based on which data corresponds to the data variables defined by NLG executor **120**.

[0062] At step **314**, augmented natural language generation platform **104** may associate the narrative framework with the worksheet. For example, if data in the selected worksheet changes over time, NLG executor **120** may be configured to update the values of the data variables based on the change. In some embodiments, when the notes are generated, a corresponding integration and project may be created and stored in database **130**. For example, when worksheet data changes, the new data may be passed through the corresponding integration to update data variables in the notes.

[0063] FIG. 4A illustrates a system bus computing system architecture **400**, according to example embodiments. System **400** may be representative of at least a portion of augmented natural language generation platform **104**. One or more components of system **400** may be in electrical communication with each other using a bus **405**. System **400** may include a processing unit (CPU or processor) **410** and a system bus **405** that couples various system components including the system memory **415**, such as read only memory (ROM) **420** and random access memory (RAM)

425, to processor **410**. System **400** may include a cache of high-speed memory connected directly with, in close proximity to, or integrated as part of processor **410**. System **400** may copy data from memory **415** and/or storage device **430** to cache **412** for quick access by processor **410**. In this way, cache **412** may provide a performance boost that avoids processor **410** delays while waiting for data. These and other modules may control or be configured to control processor **410** to perform various actions. Other system memory **415** may be available for use as well. Memory **415** may include multiple different types of memory with different performance characteristics. Processor **410** may include any general-purpose processor and a hardware module or software module, such as service **1 432**, service **2 434**, and service **3 436** stored in storage device **430**, configured to control processor **410** as well as a special-purpose processor where software instructions are incorporated into the actual processor design. Processor **410** may essentially be a completely self-contained computing system, containing multiple cores or processors, a bus, memory controller, cache, etc. A multi-core processor may be symmetric or asymmetric.

[0064] To enable user interaction with the computing device **400**, an input device **445** may represent any number of input mechanisms, such as a microphone for speech, a touch-sensitive screen for gesture or graphical input, keyboard, mouse, motion input, speech and so forth. An output device **435** may also be one or more of a number of output mechanisms known to those of skill in the art. In some instances, multimodal systems may enable a user to provide multiple types of input to communicate with computing device **400**. Communications interface **440** may generally govern and manage the user input and system output. There is no restriction on operating on any particular hardware arrangement and therefore the basic features here may easily be substituted for improved hardware or firmware arrangements as they are developed.

[0065] Storage device **430** may be a non-volatile memory and may be a hard disk or other types of computer readable media which may store data that are accessible by a computer, such as magnetic cassettes, flash memory cards, solid state memory devices, digital versatile disks, cartridges, random access memories (RAMs) **425**, read only memory (ROM) **420**, and hybrids thereof.

[0066] Storage device **430** may include services **432**, **434**, and **436** for controlling the processor **410**. Other hardware or software modules are contemplated. Storage device **430** may be connected to system bus **405**. In one aspect, a hardware module that performs a particular function may include the software component stored in a computer-readable medium in connection with the necessary hardware components, such as processor **410**, bus **405**, display **435**, and so forth, to carry out the function.

[0067] FIG. 4B illustrates a computer system **450** having a chipset architecture that may represent at least a portion of augmented natural language generation platform **104**. Computer system **450** may be an example of computer hardware, software, and firmware that may be used to implement the disclosed technology. System **450** may include a processor **455**, representative of any number of physically and/or logically distinct resources capable of executing software, firmware, and hardware configured to perform identified computations. Processor **455** may communicate with a chipset **460** that may control input to and output from processor **455**. In this example, chipset **460** outputs information to output **465**, such as a display, and may read and write information to storage device **470**, which may include

magnetic media, and solid state media, for example. Chipset **460** may also read data from and write data to RAM **475**. A bridge **480** for interfacing with a variety of user interface components **485** may be provided for interfacing with chipset **460**. Such user interface components **485** may include a keyboard, a microphone, touch detection and processing circuitry, a pointing device, such as a mouse, and so on. In general, inputs to system **450** may come from any of a variety of sources, machine generated and/or human generated.

[0068] Chipset **460** may also interface with one or more communication interfaces **490** that may have different physical interfaces. Such communication interfaces may include interfaces for wired and wireless local area networks, for broadband wireless networks, as well as personal area networks. Some applications of the methods for generating, displaying, and using the GUI disclosed herein may include receiving ordered datasets over the physical interface or be generated by the machine itself by processor **455** analyzing data stored in storage **470** or **475**. Further, the machine may receive inputs from a user through user interface components **485** and execute appropriate functions, such as browsing functions by interpreting these inputs using processor **455**.

[0069] It may be appreciated that example systems **400** and **450** may have more than one processor **410** or be part of a group or cluster of computing devices networked together to provide greater processing capability.

[0070] While the foregoing is directed to embodiments described herein, other and further embodiments may be devised without departing from the basic scope thereof. For example, aspects of the present disclosure may be implemented in hardware or software or a combination of hardware and software. One embodiment described herein may be implemented as a program product for use with a computer system. The program(s) of the program product define functions of the embodiments (including the methods described herein) and can be contained on a variety of computer-readable storage media. Illustrative computer-readable storage media include, but are not limited to: (i) non-writable storage media (e.g., read-only memory (ROM) devices within a computer, such as CD-ROM disks readably by a CD-ROM drive, flash memory, ROM chips, or any type of solid-state non-volatile memory) on which information is permanently stored; and (ii) writable storage media (e.g., floppy disks within a diskette drive or hard-disk drive or any type of solid state random-access memory) on which alterable information is stored. Such computer-readable storage media, when carrying computer-readable instructions that direct the functions of the disclosed embodiments, are embodiments of the present disclosure.

[0071] It will be appreciated to those skilled in the art that the preceding examples are exemplary and not limiting. It is intended that all permutations, enhancements, equivalents, and improvements thereto are apparent to those skilled in the art upon a reading of the specification and a study of the drawings are included within the true spirit and scope of the present disclosure. It is therefore intended that the following appended claims include all such modifications, permutations, and equivalents as fall within the true spirit and scope of these teachings.

1. A method, comprising:

- receiving, by a computing system, a request to generate a narrative framework for a worksheet, the narrative framework comprising a phrase that includes information from the worksheet;
- analyzing, by the computing system, data content associated with the worksheet;

inferring, by the computing system, attributes of the worksheet from the data content, the attributes corresponding to a type of data represented in the worksheet;

identifying, by the computing system, a subset of motifs from a plurality of motifs relevant to the inferred attributes of the worksheet, wherein each motif comprises a unique set of data fields;

generating, by the computing system, a narrative template for the narrative framework, the narrative template comprising a set of data fields associated with the subset of motifs;

generating, by the computing system, one or more data variables for the narrative template based on the subset of motifs;

extracting, by the computing system, data values from the worksheet, the data values corresponding to the one or more data variables; and

constructing, by the computing system, the narrative framework by inputting the data values into the one or more data variables of the narrative template to form the phrase of the narrative framework.

2. The method of claim 1, wherein inferring, by the computing system, the attributes of the worksheet from the data content comprises:

inferring data column types for the worksheet based on the data content associated with the worksheet.

3. The method of claim 1, wherein generating, by the computing system, the narrative template for the narrative framework comprises:

matching the attributes of the worksheet to the plurality of motifs to identify the subset of motifs for the narrative template.

4. The method of claim 1, further comprising:

causing, by the computing system, display of the narrative framework in a graphical user interface.

5. The method of claim 4, further comprising:

receiving, by the computing system via the graphical user interface, user input associated with a format of a first value in a first data variable; and

updating, by the computing system, the narrative framework based on the format.

6. The method of claim 1, wherein the request to generate the narrative framework is received from a plugin executing with a data visualization application on a client device.

7. The method of claim 1, further comprising:

receiving, by the computing system, a second request to modify a value of a data variable of the one or more data variables in the narrative framework; and

updating, by the computing system, the data variable of the one or more data variables based on the second request.

8. A non-transitory computer readable medium comprising one or more sequences of instructions, which, when executed by a processor, causes a computing system to perform operations comprising:

receiving, by the computing system, a request to generate a narrative framework for a worksheet, the narrative framework comprising a phrase that includes information from the worksheet;

analyzing, by the computing system, data content associated with the worksheet;

inferring, by the computing system, attributes of the worksheet from the data content, the attributes corresponding to a type of data represented in the worksheet;

identifying, by the computing system, a subset of motifs from a plurality of motifs relevant to the inferred attributes of the worksheet, wherein each motif comprises a unique set of data fields;

generating, by the computing system, a narrative template for the narrative framework, the narrative template comprising a set of data fields associated with the subset of motifs;

generating, by the computing system, one or more data variables for the narrative template based on the subset of motifs;

extracting, by the computing system, data values from the worksheet, the data values corresponding to the one or more data variables; and

constructing, by the computing system, the narrative framework by inputting the data values into the one or more data variables of the narrative template to form the phrase of the narrative framework.

9. The non-transitory computer readable medium of claim 8, wherein inferring, by the computing system, the attributes of the worksheet from the data content comprises:

inferring data column types for the worksheet based on the data content associated with the worksheet.

10. The non-transitory computer readable medium of claim 8, wherein generating, by the computing system, the narrative template for the narrative framework comprises:

matching the attributes of the worksheet to the plurality of motifs to identify the subset of motifs for the narrative template.

11. The non-transitory computer readable medium of claim 8, further comprising:

causing, by the computing system, display of the narrative framework in a graphical user interface.

12. The non-transitory computer readable medium of claim 11, further comprising:

receiving, by the computing system via the graphical user interface, user input associated with a format of a first value in a first data variable; and

updating, by the computing system, the narrative framework based on the format.

13. The non-transitory computer readable medium of claim 8, wherein the request to generate the narrative framework is received from a plugin executing with a data visualization application on a client device.

14. The non-transitory computer readable medium of claim 8, further comprising:

receiving, by the computing system, a second request to modify a value of a data variable of the one or more data variables in the narrative framework; and

updating, by the computing system, the data variable of the one or more data variables based on the second request.

15. A system comprising:

a processor; and

a memory having programming instructions stored thereon, which, when executed by the processor, causes the system to perform operations comprising:

receiving a request to generate a narrative framework for a worksheet, the narrative framework comprising a phrase that includes information from the worksheet;

analyzing data content associated with the worksheet;
inferring attributes of the worksheet from the data content, the attributes corresponding to a type of data represented in the worksheet;
identifying a subset of motifs from a plurality of motifs relevant to the inferred attributes of the worksheet, wherein each motif comprises a unique set of data fields;
generating a narrative template for the narrative framework, the narrative template comprising a set of data fields associated with the subset of motifs;
generating one or more data variables for the narrative template based on the subset of motifs;
extracting data values from the worksheet, the data values corresponding to the one or more data variables; and
constructing the narrative framework by inputting the data values into the one or more data variables of the narrative template to form the phrase of the narrative framework.

16. The system of claim **15**, wherein inferring the attributes of the worksheet from the data content comprises:
inferring data column types for the worksheet based on the data content associated with the worksheet.

17. The system of claim **15**, wherein generating the narrative template for the narrative framework comprises:
matching the attributes of the worksheet to the plurality of motifs to identify the subset of motifs for the narrative template.

18. The system of claim **15**, wherein the operations further comprise:
causing display of the narrative framework in a graphical user interface.

19. The system of claim **18**, wherein the operations further comprise:
receiving, via the graphical user interface, user input associated with a format of a first value in a first data variable; and
updating the narrative framework based on the format.

20. The system of claim **15**, wherein the operations further comprise:
receiving a second request to modify a value of a data variable of the one or more data variables in the narrative framework; and
updating the data variable of the one or more data variables based on the second request.

* * * * *